



Guangzhou LCS Compliance Testing Laboratory Ltd.

Add: No. 44-1, Qianfeng North Road, Shiji Village, Shiji Town, Panyu District,

Guangzhou City, Guangdong, China

Tel: (86) 020-39166689 Fax: (86) 020-39166619 Internet: [Http://www.LCS-cert.com](http://www.LCS-cert.com)

Report No.: LCS180622005CR

TEST REPORT

Applicant : Shenzhen MXJO Technology Co., Limited
Address : No. 412, Block A, Guangxingyuan Internet Creative Park, No. 2005,
Xingye Road, Xixiang Street, Bao'an District, Shenzhen, Guangdong,
China (Mainland)


Report on the submitted samples said to be:


Sample Name : 21700 Lithium-ion rechargeable battery
Trade Mark : MXJO
Style/ Item No. : IMR 21700-4000mAh
Manufacturer : Shenzhen MXJO Technology Co., Limited
Address : No. 412, Block A, Guangxingyuan Internet Creative Park, No. 2005,
Xingye Road, Xixiang Street, Bao'an District, Shenzhen, Guangdong,
China (Mainland)
Sample Receiving Date : June 22, 2018
Testing Period : June 22, 2018 ~ July 04, 2018
Results : Please refer to next page(s).
Conclusion : The results shown on the report comply with the limit in commission
Decision of 21 July 2011 amending Directive 2011/65/EU (RoHS).

Signed for and on behalf of LCS

Written By: 
Linda Ning

Checked by: 
Suez Su

Approved by: 
Hart Qiu



The Test Report is issued by the Company subject to its General Conditions of Service printed overleaf. Attention is drawn to the limitations of liability, indemnification and jurisdictional issues defined therein. The results shown in this test report refer only to the sample(s) tested unless otherwise stated. This Test Report cannot be reproduced, except in full, without prior written permission of the Company.



Guangzhou LCS Compliance Testing Laboratory Ltd.

Add: No. 44-1, Qianfeng North Road, Shiji Village, Shiji Town, Panyu District,
Guangzhou City, Guangdong, China

Tel: (86) 020-39166689 Fax: (86) 020-39166619 Internet: [Http://www.LCS-cert.com](http://www.LCS-cert.com)

Report No.: LCS180622005CR

1. LISTS

No.	Part Name	Report No.
1	Black lettering(battery)	LCS171212048AR
2	Silver metal sheet(battery)	LCS171212075AR
3	White plastic film(battery)	LCS171212051AR
4	Electrolytic paper(battery)	LCS171212080AR
5	Black Plastic Pads(battery)	LCS171212071AR
6	Black carbon powder(battery)	LCS171212037AR
7	Black plastic film(battery)	LCS171212053AR
8	Gold metal sheet(battery)	LCS171212080AR

2. TEST DATA SUMMARY

Test items	Lead (Pb)	Cadmium (Cd)	Mercury (Hg)	Hexavalent Chromium Cr(VI)	PBBs	PBDEs
Unit	ppm	ppm	ppm	ppm	ppm	ppm
1	N.D.	N.D.	N.D.	N.D.	N.D.	N.D.
2	N.D.	N.D.	N.D.	N.D.	N.D.	N.D.
3	N.D.	N.D.	N.D.	N.D.	N.D.	N.D.
4	N.D.	N.D.	N.D.	N.D.	N.D.	N.D.
5	N.D.	N.D.	N.D.	N.D.	N.D.	N.D.
6	N.D.	N.D.	N.D.	N.D.	N.D.	N.D.
7	N.D.	N.D.	N.D.	N.D.	N.D.	N.D.
8	N.D.	N.D.	N.D.	N.D.	N.D.	N.D.



Guangzhou LCS Compliance Testing Laboratory Ltd.

Add: No. 44-1, Qianfeng North Road, Shiji Village, Shiji Town, Panyu District,
Guangzhou City, Guangdong, China

Tel: (86) 020-39166689 Fax: (86) 020-39166619 Internet: [Http://www.LCS-cert.com](http://www.LCS-cert.com)

Report No.: LCS180622005CR

Note:

(1) N.D. = Not detected (<MDL)

(2) ppm = mg/kg

(3) N.A. = Not Analyzed

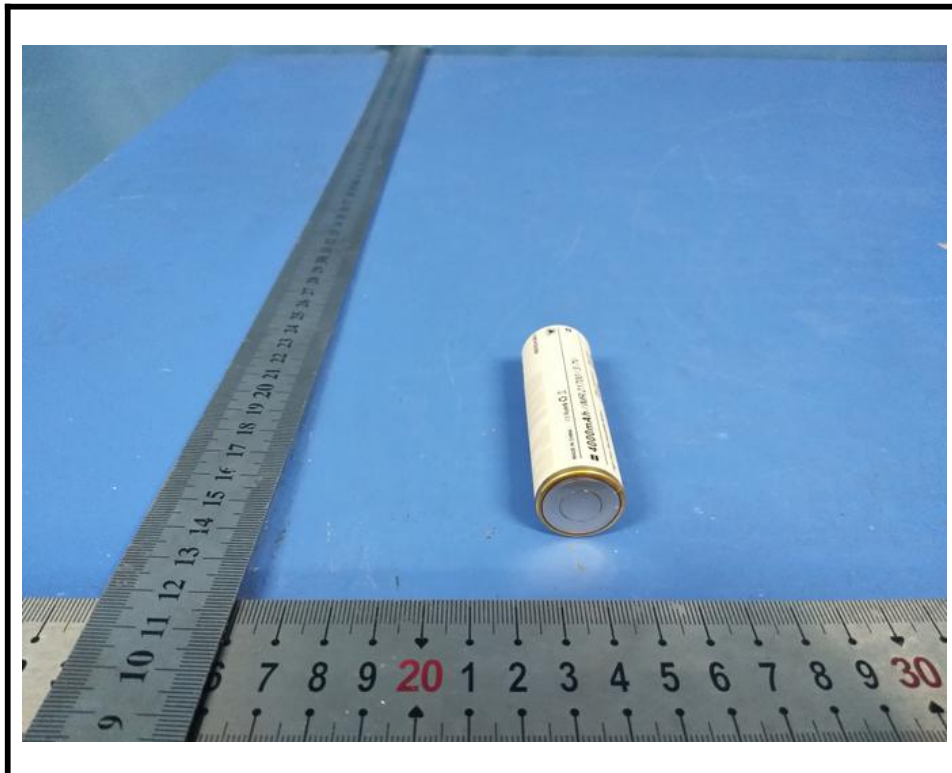
(4) Negative = the concentration of Hexavalent Chromium extracted from 50cm² sample is less than the detection limit.

Remark: Lead in electronic components, which are exempted from (RoHS) the requirements.

Disclaimer:

- The integration report is not equivalent to the test report.
- LCS does not shoulder responsibility for the authenticity of all the test data listed in integration report, which are submitted by the applicants.
- The applicants are responsible for all legal obligation caused by the inaccuracy and invalidity of the original report.
- If this disclaimer contradicts any other terms and conditions of LCS, this disclaimer will prevail.

3. PHOTOGRAPHS OF TEST SAMPLE



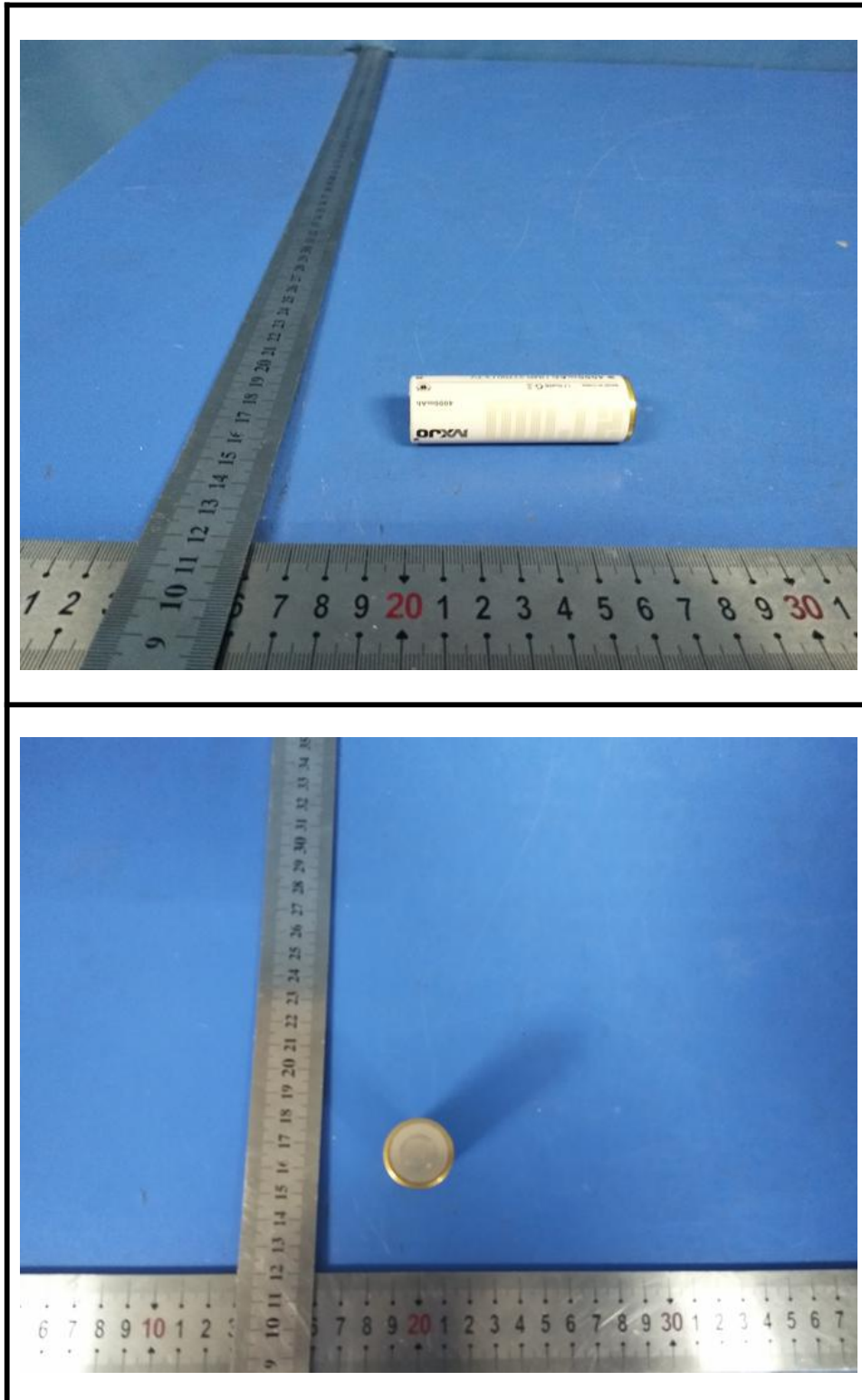


Guangzhou LCS Compliance Testing Laboratory Ltd.

Add: No. 44-1, Qianfeng North Road, Shiji Village, Shiji Town, Panyu District,
Guangzhou City, Guangdong, China

Tel: (86) 020-39166689 Fax: (86) 020-39166619 Internet: [Http://www.LCS-cert.com](http://www.LCS-cert.com)

Report No.: *LCS180622005CR*



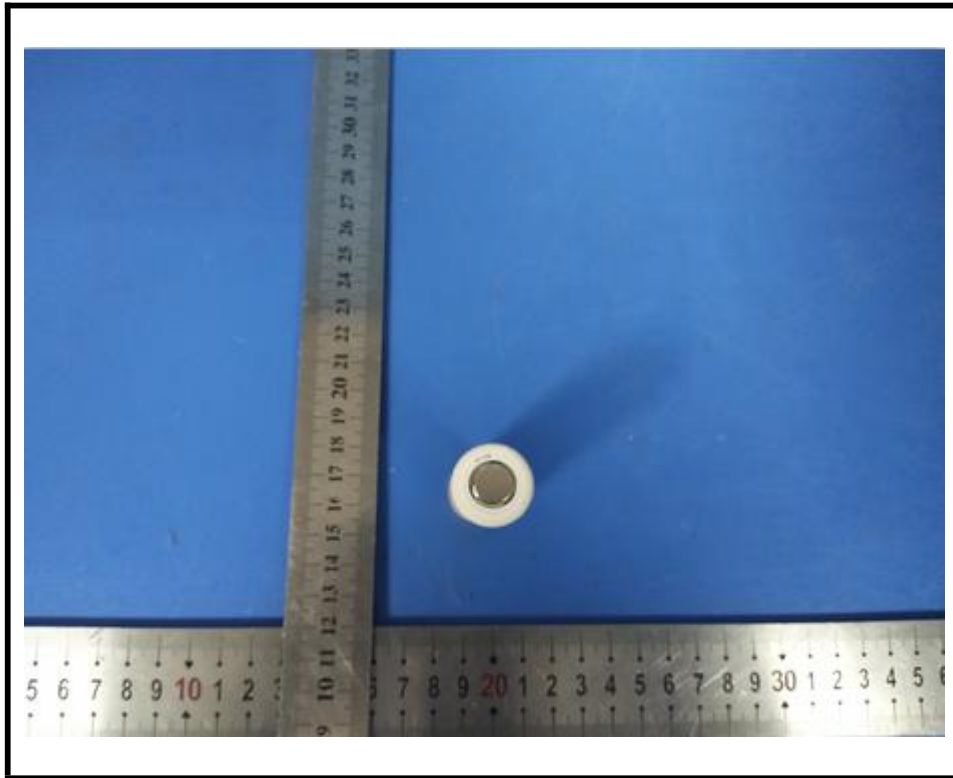


Guangzhou LCS Compliance Testing Laboratory Ltd.

Add: No. 44-1, Qianfeng North Road, Shiji Village, Shiji Town, Panyu District,
Guangzhou City, Guangdong, China

Tel: (86) 020-39166689 Fax: (86) 020-39166619 Internet: [Http://www.LCS-cert.com](http://www.LCS-cert.com)

Report No.: LCS180622005CR



LCS authenticate the photo on original report only

End of Report